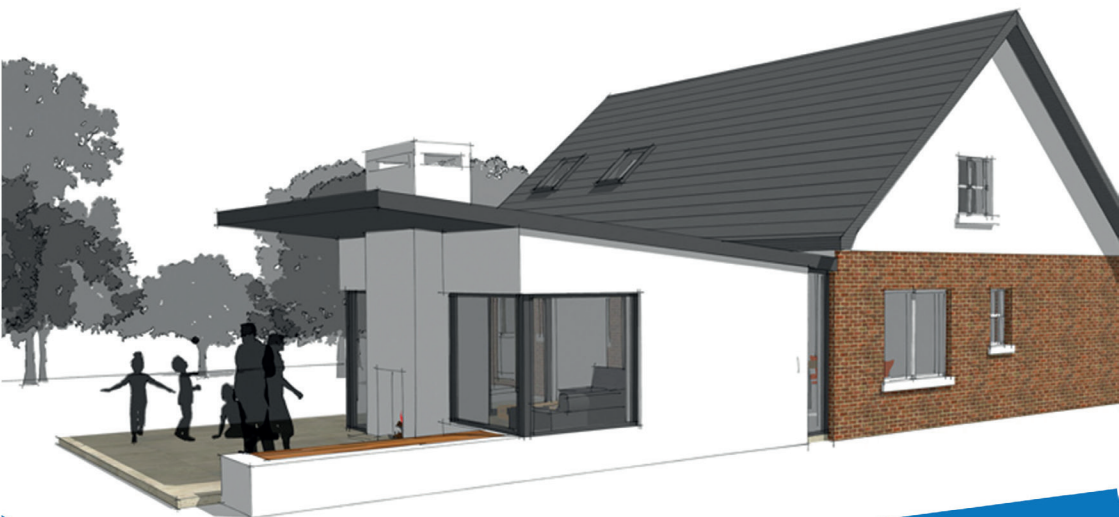






**Extensions design  
WITH YOU IN MIND**  
**Don't Just Build It  
EASYBUILD IT**

 [info@easybuild-solutions.com](mailto:info@easybuild-solutions.com)

 [www.easybuild-solutions.com](http://www.easybuild-solutions.com)



 Unit 1,  
2 Moorgate,  
Bury, BL9 7AF

 08002118687



# Bespoke house extensions BY EASYBUILD



## ABOUT EASYBUILD

Easybuild offers a new, easy and modern way to expand your house with affordable and personalised extensions that match your house. Our engineers ensure that your dream extra space is built off site and therefore there is no mess or disruption to you.

Easybuild is the easiest way to expand your horizons and give yourself the extra space without moving out of your beloved home.

Our pre-fabricated extensions are designed in a variety of shapes and sizes, engineered in a factory and delivered to your plot for final assembly.

Easybuild extensions are not only cheaper than traditional build but they are better insulated.

A product that is well insulated will use less energy, thereby saving the owner further energy costs and minimizing the carbon footprint that would otherwise be left behind.

## WHY CHOOSE EASYBUILD EXTENSIONS

- ✓ 30% Cheaper than a traditional build
- ✓ Better Insulated and more eco-friendly
- ✓ Single storey build within 2 weeks
- ✓ No planning permission required up to certain size
- ✓ Engineered in a factory
- ✓ No mess and disruption
- ✓ No skips on your drive way
- ✓ No Builders in your property for weeks on end
- ✓ Energy efficient
- ✓ Minimizing the carbon footprint
- ✓ The following U-values of can now be achieved:
  - Walls - 0.18W/m 2k
  - Floors - 0.18W/m 2k

## WHY CHOOSE EASYBUILD?

- ✓ Professional and customised service
- ✓ High-quality materials
- ✓ Exceptional standards
- ✓ Highly-qualified installation team
- ✓ Value for money
- ✓ Rapid installation
- ✓ 10 year independence insurance
- ✓ Nationwide coverage
- ✓ Eco-friendly
- ✓ Quality assured
- ✓ Price match guarantee





**Choose between  
our tiled roof extension  
or flat roof sky lantern system**



**flat roof  
sky lantern  
system**



## EASY 5 STEPS INSTALLATION:

1



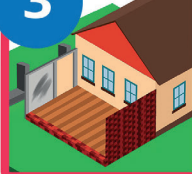
Installation of the concrete pads.  
NO MESS  
& DISRUPTION

2



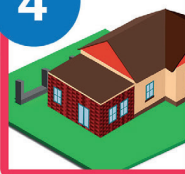
Fixing the steel base to the house wall.

3



Installation of brick skirt and modular brick walls to steel base.

4



Installation of the roof system of your choice, windows, doors and other appliances.

5



Internal plaster work



**FOR FREE NO OBLIGATION QUOTE RING 0800 211 86 87**



## 1. OUTER LAYER build from 3 PARTS

- A. Brick Slip
- B. High Density Insulation Board
- C. Structural Ply Backing Panel

## 2. HOLLOW CARCASS

With pre-cut holes for easy access for wiring and plumbing  
-Nice and Easy connection

## 3. WALL CARCASS

Galvanised steel frame to provide a super strong but lightweight construction.

## 4. FLOORING

22mm moisture resistant chipboard flooring system.

## 5. ADJUSTABLE LEGS

Screw mechanism to give maximum adjustable levels.

## 6. UNDER FLOOR

9mm structural ply, Europhane insulation.

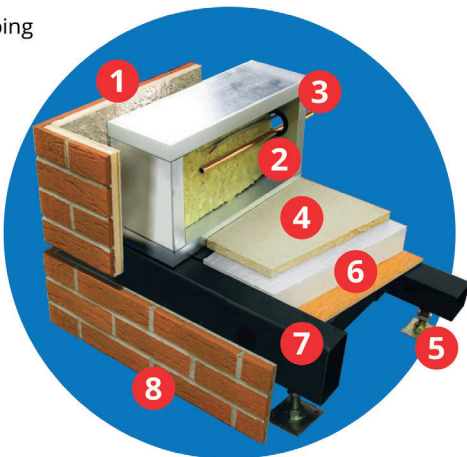
## 7. BASE FRAME

Heavy duty steel frame.

## 8. BASE SKIRT

Brick slip on cement partical board.

# EASYBUILD EXTENSION IN A NUTSHELL:



## BRICK FINISH

Easybuild walls are faced with real brick tiles and mortar. We have a wide selection of bricks tiles that will match any house.

